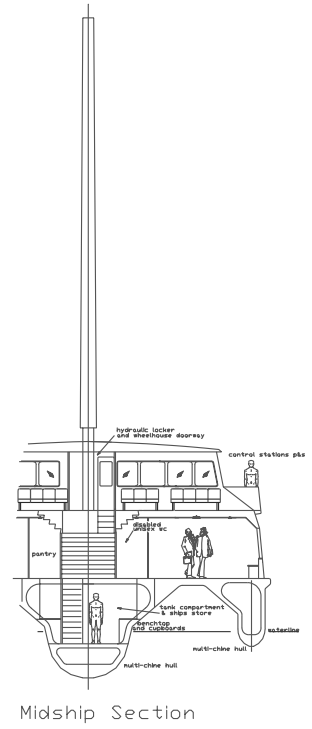
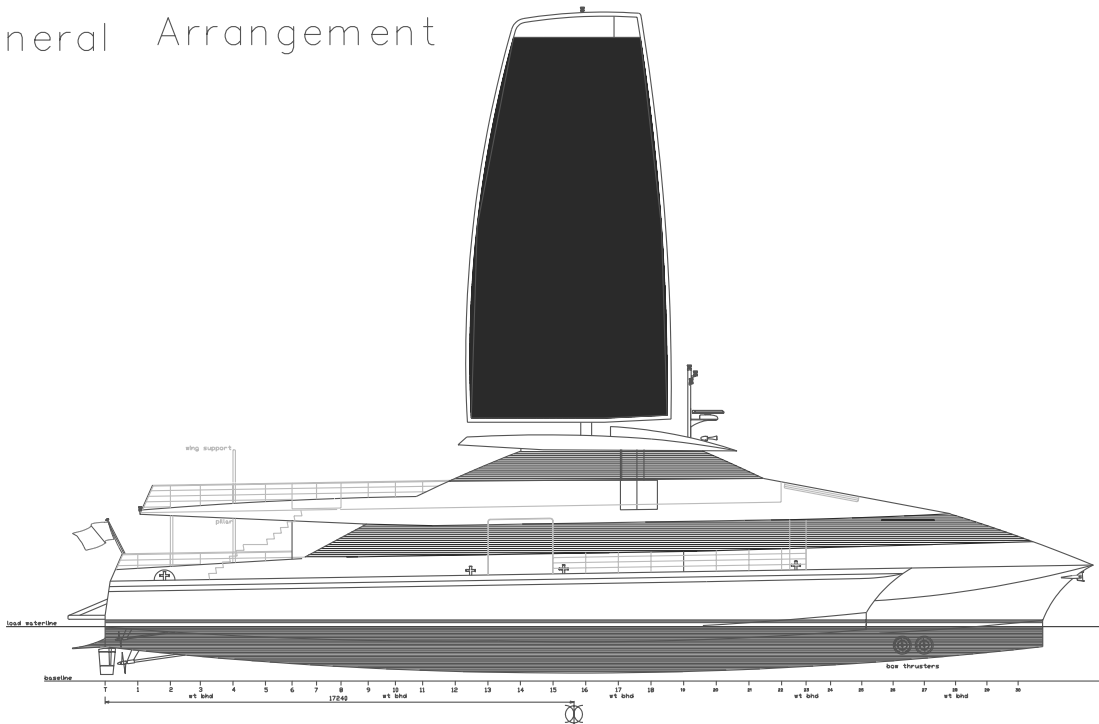
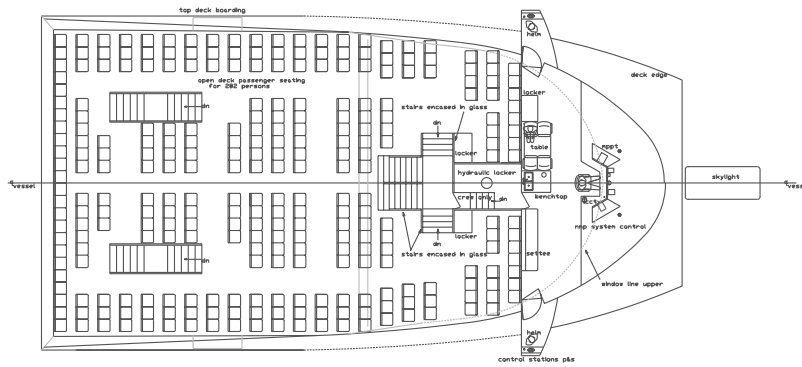


General Arrangement

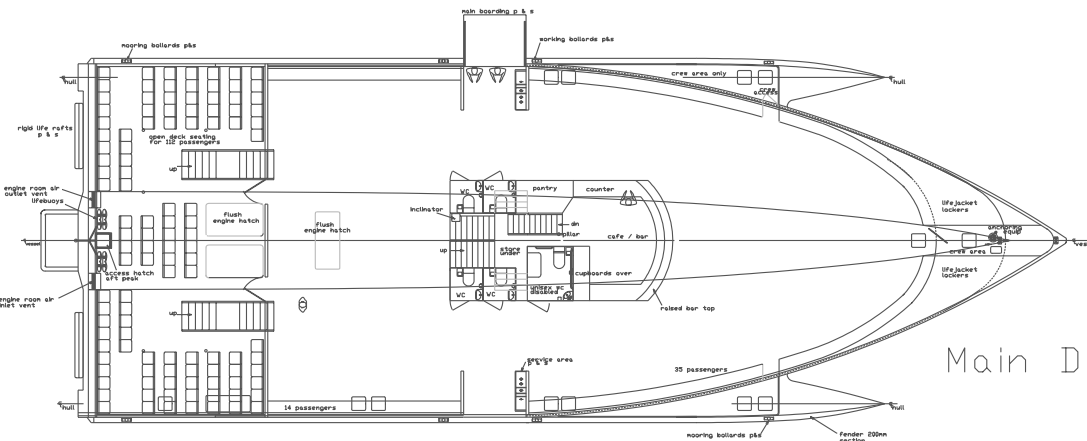


Midship Section

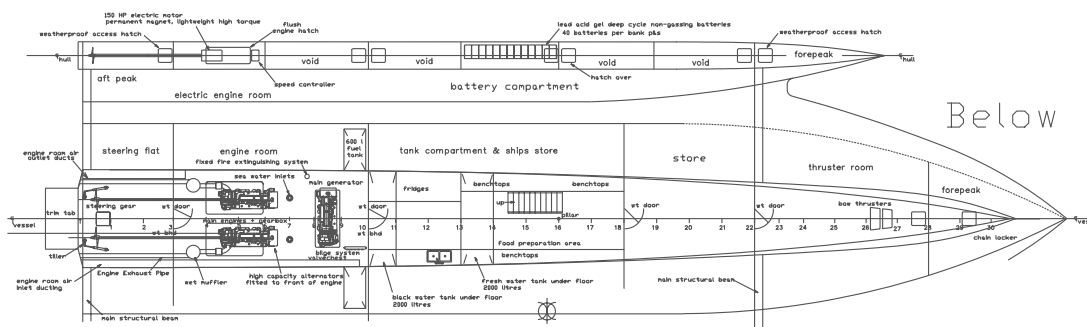
Profile



First Deck Plan



Main Deck Plan



Below Deck Plan

Principal Particulars

Length Overall :	36.34 m	Passenger Capacity - 600 max	Main Engines :	2 x 150 HP Electric	
Length Waterline:	34.48 m	Main Deck :	98 internal bench seats	Diesel Engine:	2 x 450 HP c/w ZF gears
Beam Moulded:	13.00 m	Upper Deck :	112 external aft deck	Propulsion Type:	4 - Blade propellers
Beam Maximum:	13.40 m	Standing :	108	Range :	4hrs / 24 Nautical Miles under battery power
Beam of Main Hull:	3.50 m	Crew :	12	Diesel Tank:	2 x 600 Litres
Beam of Outer Hulls:	1.00 m	Construction Material:	Marine grade aluminium	Fresh Water Tank:	1 x 2000 Litres
Hull Draft (Max):	1.80 m			Black Water Tank:	1 x 2000 Litres
Draft (Max):	1.80 m			Electrical System:	24 / 110 / 415 Volt
Service Speed :	12 Knots			Batteries:	80 x lead acid gel
Lifesaving Equip:	610 lifejackets			Battery Charging:	2 hrs quickcharge
	rigid liferafts x 4			Solar Cell Area :	90 m2 on Wing each side

B	05-02-06	G.A.P.	Update general;
A	Jan'06	G.A.P.	Update general;
REV	DATE	DRAWN	DESCRIPTION
Grahame Parker Design Naval Architects LVL 2, 37-39 THE CORSO, MANLY 2095 NSW AUSTRALIA Phone: (02) 9977 0275 Fax: (02) 9977 0275 E-mail: pugwash@dragon.net.au			
VESSEL	BayTri	DRAWN	G.A.P.
CLIENT	SSH	CHECKED	G.A.P.
GENERAL ARRANGEMENT		SCALE	1:100
		DATE	Sept'05
		ISSUE	2
		DRAWING NO.	452/GA