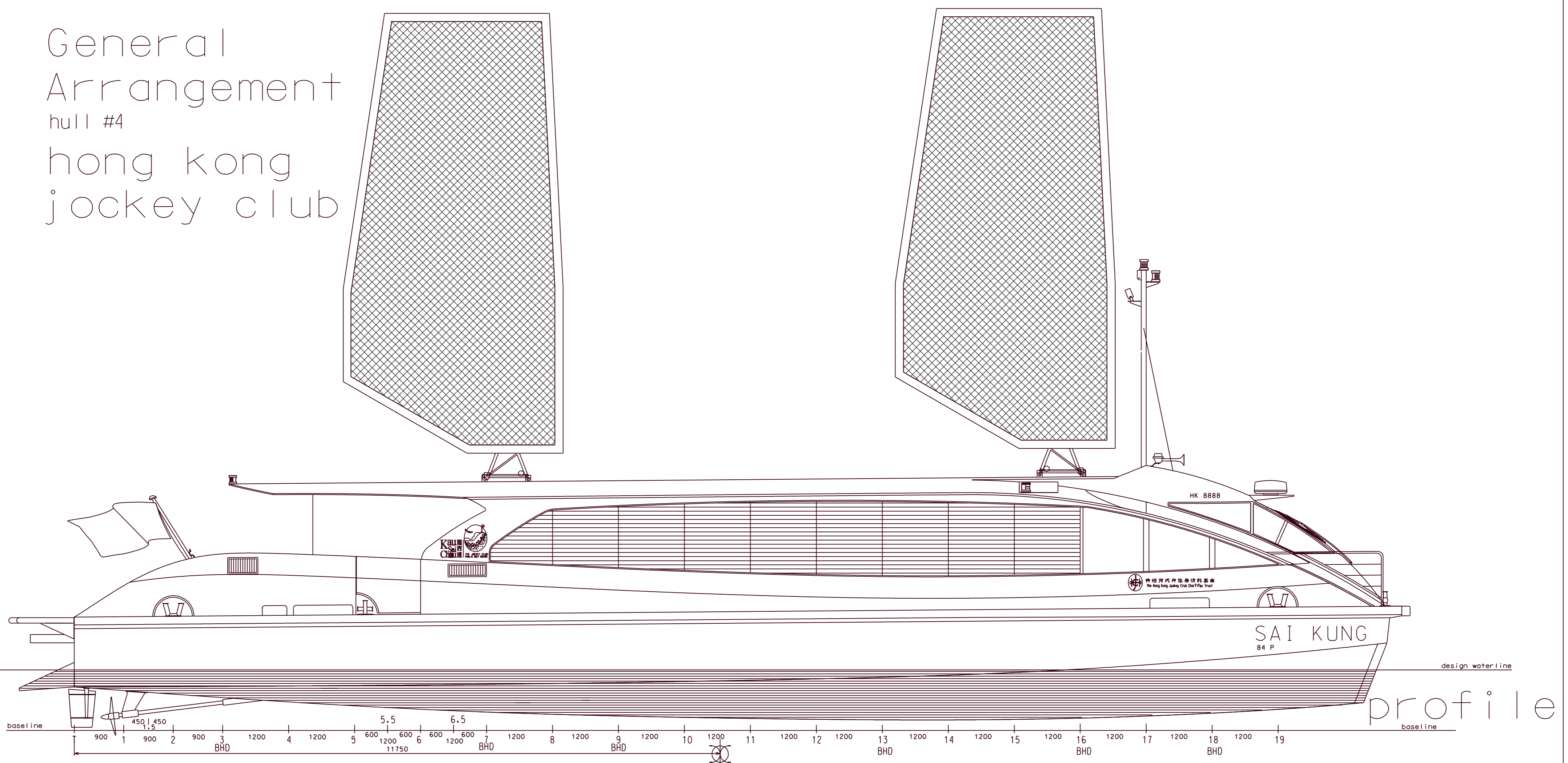
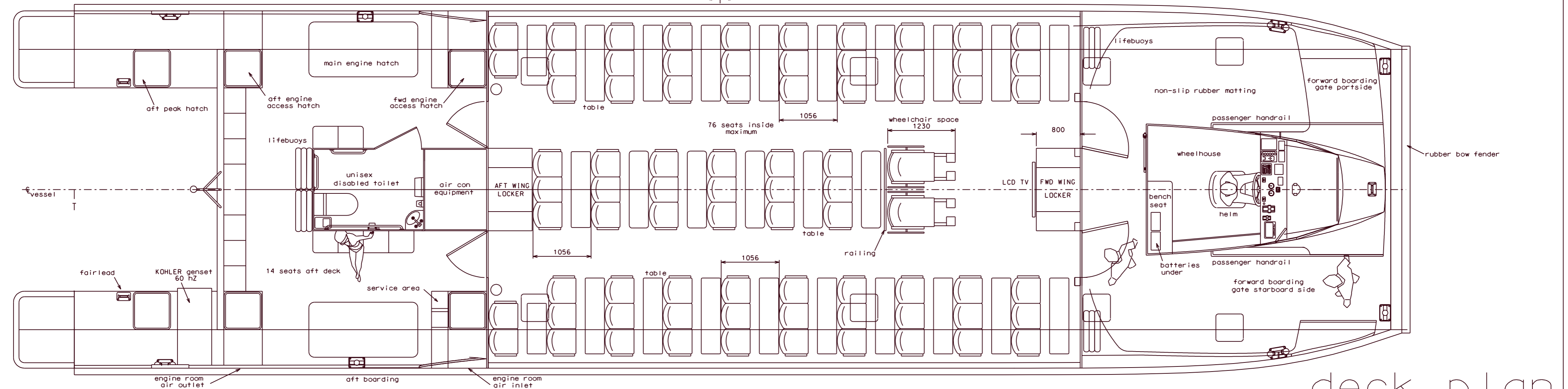


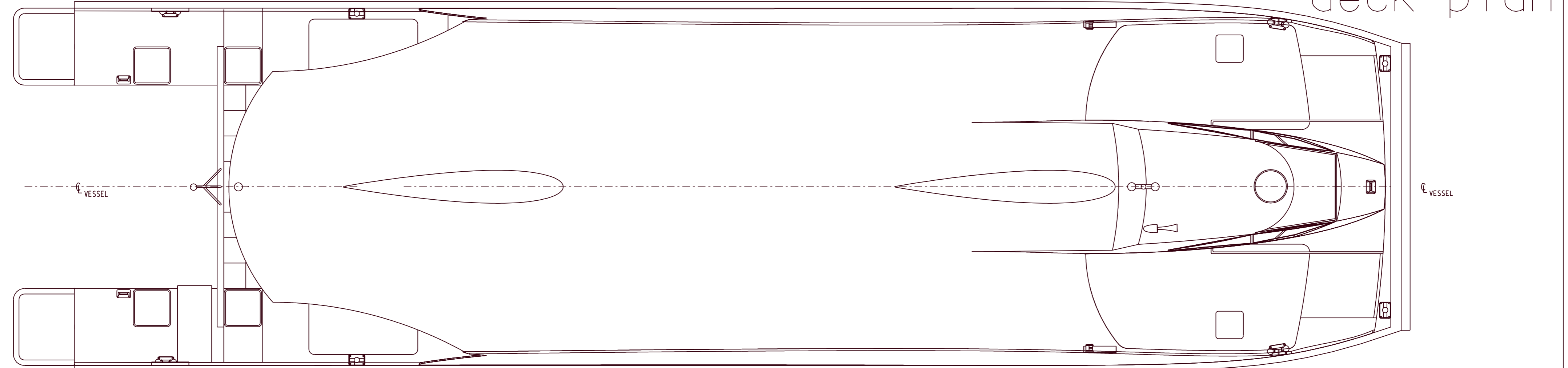
General Arrangement
hull #4
hong kong jockey club



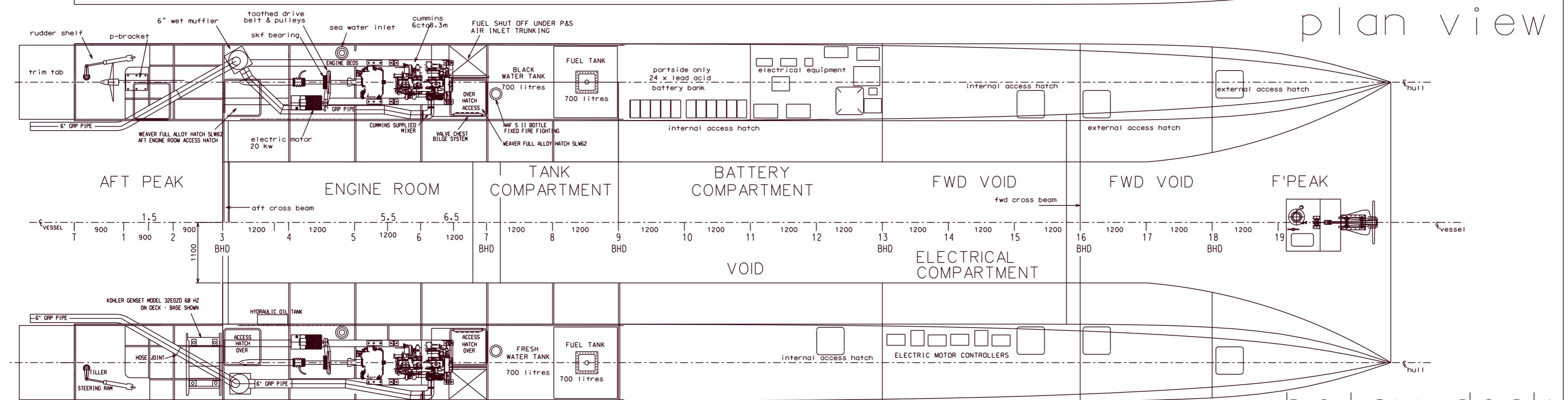
profile



deck plan



plan view



below deck

Principal Particulars

HK Partially Smooth Waters	Passenger Facilities : TV, DVD	MACHINERY -	TANKAGE -
Length Overall: 23.95 m	Air Conditioning : Cabin & Wheelhouse	Main Engines : Cummins 6CTA 8.3M	Black Water Tank: 1 x 700 litres portside only
Beam Maximum: 6.74 m	Boarding Areas : Main Boarding Fwd Bow	Gearbox: ZF 325-1A	Fresh Water Tank: 1 x 700 Litres starboardside only
Beam Moulded: 6.50 m	Boarding Aft P & S	Ratio 2.04 : 1	FuelTanks: 2 x 700 Litres
Beam of WL Hull: 1.40 m	Construction Material:	Genset : KOHLER 32 kW @ 60 Hz	
Hull Draft (Max): 0.95 m	Hulls and Main Deck - GRP Composite	Range : 15hrs / 200 Nm	
Vessel Draft (Max): 1.25 m	Superstructure - GRP composite	Fuel Consumpt: 51.9 l/hr per engine @ service speed	
Passenger Capacity - 84 total	Electrical Specification:	Service Speed: 16 knots	
Interior : 76 seats	Electrical System: 24 VDC /220/415 VAC		
Exterior : 2 wheelchair spaces	Solar Cell Area: 22 m2 / side / wing		
Crew : 14 seats aftdeck	Solar Power: 6.0 kW		
	Sail Area: 28 m2 / wing		
	Motors: 2 x 20 kW Belt driven		

B	20-10-09	G.A.P.	Wing shape wheelhouse roof mod: interior arr:ment: general update:
A	1-08-07	G.A.P.	Gensets to deck: bow shape for berthing: electrical machinery added
REV	DATE	DRAWN	DESCRIPTION
GPD AUSTRALIA PTY LTD NAVAL ARCHITECTS LVL 2, 37-39 THE CORSO, MANLY 2095 NSW AUSTRALIA PHONE: (02) 9977 0275 FAX: (02) 9977 0275			
VESSEL	HKJC	DRAWN	G.A.P.
CLIENT	SOLAR SAILOR HOLDINGS LTD	CHECKED	G.A.P.
TITLE	GENERAL ARRANGEMENT HULL #4	SCALE	1:50
		DATE	JULY'07
		ISSUE	1
		DRAWING NO.	13/GA#4

A1 DO NOT SCALE ALL DIMENSIONS ARE IN MM UNLESS OTHERWISE NOTED

THIS DRAWING AND ALL THE INFORMATION SHALL REMAIN THE PROPERTY OF GPD AUSTRALIA PTY LTD IT MUST NOT BE COPIED OR IMPARTED TO ANY OTHER PARTY WITHOUT WRITTEN PERMISSION.